

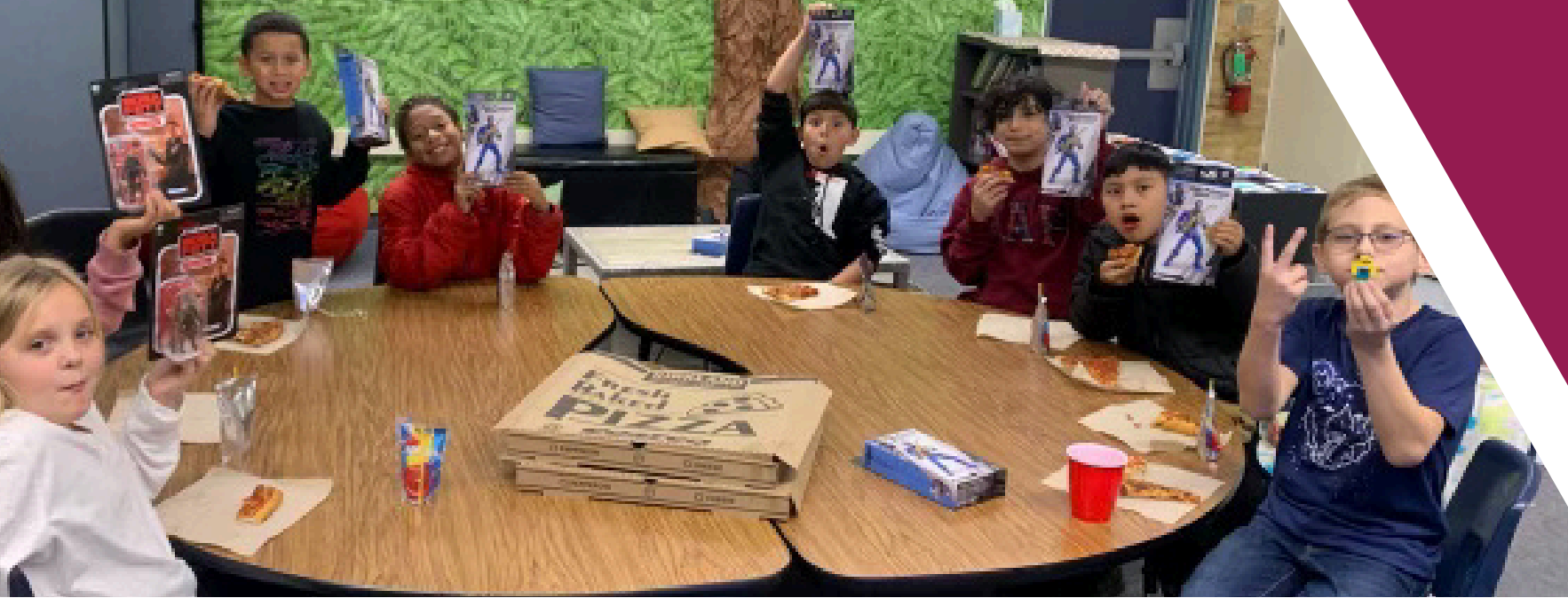


HandinHand

MENTORING
STUDENT ENRICHMENT SERVICES



www.hinhmentoring.com



AGENDA

▶	Introduction	01
▶	Company Overview	02
▶	Our Schools	03
▶	Market Analysis	04
▶	Proposed Solution	05

▶	Implementation Plan	05
▶	Benefits and Impact	06
▶	Our Team	07
▶	Conclusion	08



INTRODUCTION

Hand in Hand Youth Mentoring Program is dedicated to empowering young individuals through meaningful mentorship, guidance, and support. We inspire and equip youth with the confidence, skills, and resources needed to achieve their full potential. Through one-on-one mentoring, group activities, and community engagement, we foster personal growth, leadership, and positive life choices. At Hand in Hand, we believe that strong relationships and mentorship can transform lives and create brighter futures. Many hands make light work! Let's continue our partnership making a lasting impact—one young person at a time.





COMPANY OVERVIEW

Mission Statement

Our goal is to provide students with genuine support, fostering positive influences through events and partnerships while creating a safe and supportive school environment. Mentors collaborate with teachers, school personnel, and the community to strengthen relationships, improve school engagement, and enhance student success.

By advocating for each student, mentors help build self-esteem, emotional stability, and academic performance. They work closely with teachers to improve communication and with guardians to promote attendance, positive behavior, and respect both at school and at home.





SCHOOLS WE SERVE

Birney

Ericson

Ewing

**Golden Charter
Academy**

Heaton

King

Kratt

Muir

Norsman

Pyle

Starr

Terronez

Tioga

Williams

**Central Valley
Student Athletes**

Buchanan

Edison

Roosevelt

Sunnyside



MARKET ANALYSIS

▶ Industry Overview

Our organization serves elementary, junior high, and high school students, providing support and resources to enhance their educational experience. Currently, we serve 384 students, demonstrating a strong commitment to student development across multiple grade levels.

▶ Target Market

Young people, often from disadvantaged backgrounds, who could benefit from a positive adult role model to support their personal development, academic achievement, career exploration, and life skills, including those facing challenges like poverty, academic struggles, family instability, or involvement with the juvenile justice system.

▶ Competitive Analysis

Strengths: Direct access to students, integration with school curricula, and availability of certified educators.

Weaknesses: Limited by school funding and policies, often focused only on remediation rather than enrichment.





PROPOSED SOLUTION



Problem Statement

Students who face academic challenges, poor attendance, and high suspension rates often struggle to meet educational milestones, which can hinder their overall success. These factors may be influenced by underlying issues such as lack of support, disengagement, or external socio-economic barriers. Without targeted interventions, these students risk falling further behind, reducing their opportunities for academic achievement and future success.

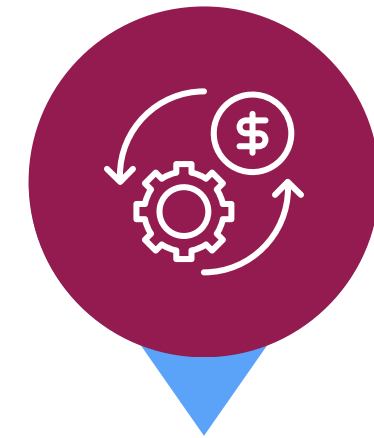
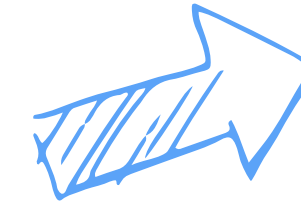
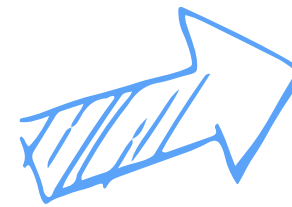
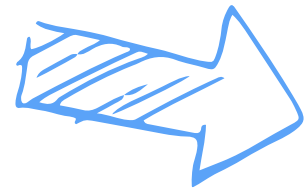
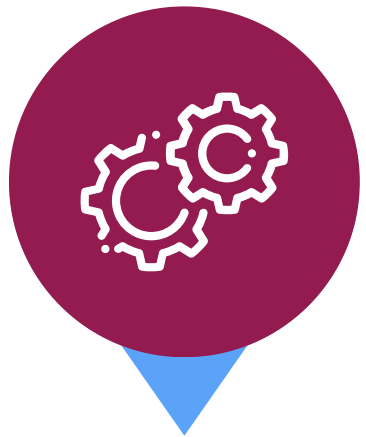
Our Solution

To address the challenges faced by students struggling academically, with poor attendance, and high suspension rates, we implemented a holistic support system focused on academic, social, and emotional development. Through strong partnerships with schools, families, and community stakeholders, we provided targeted interventions that led to measurable improvements:

- 238 students showed academic improvement.
- 202 students demonstrated better attendance.
- 351 students experienced a decrease in suspensions.

By fostering a collaborative and supportive environment, we empowered students to overcome barriers, stay engaged in their education, and build a foundation for long-term success.

IMPLEMENTATION PLAN



Phase 1: Assessment & Planning

- Identify students in need based on academic performance, attendance, and suspension records.
- Establish partnerships with schools, families, and community stakeholders.
- Develop a tailored intervention plan incorporating academic, social, and emotional support.

Phase 2: Program Execution

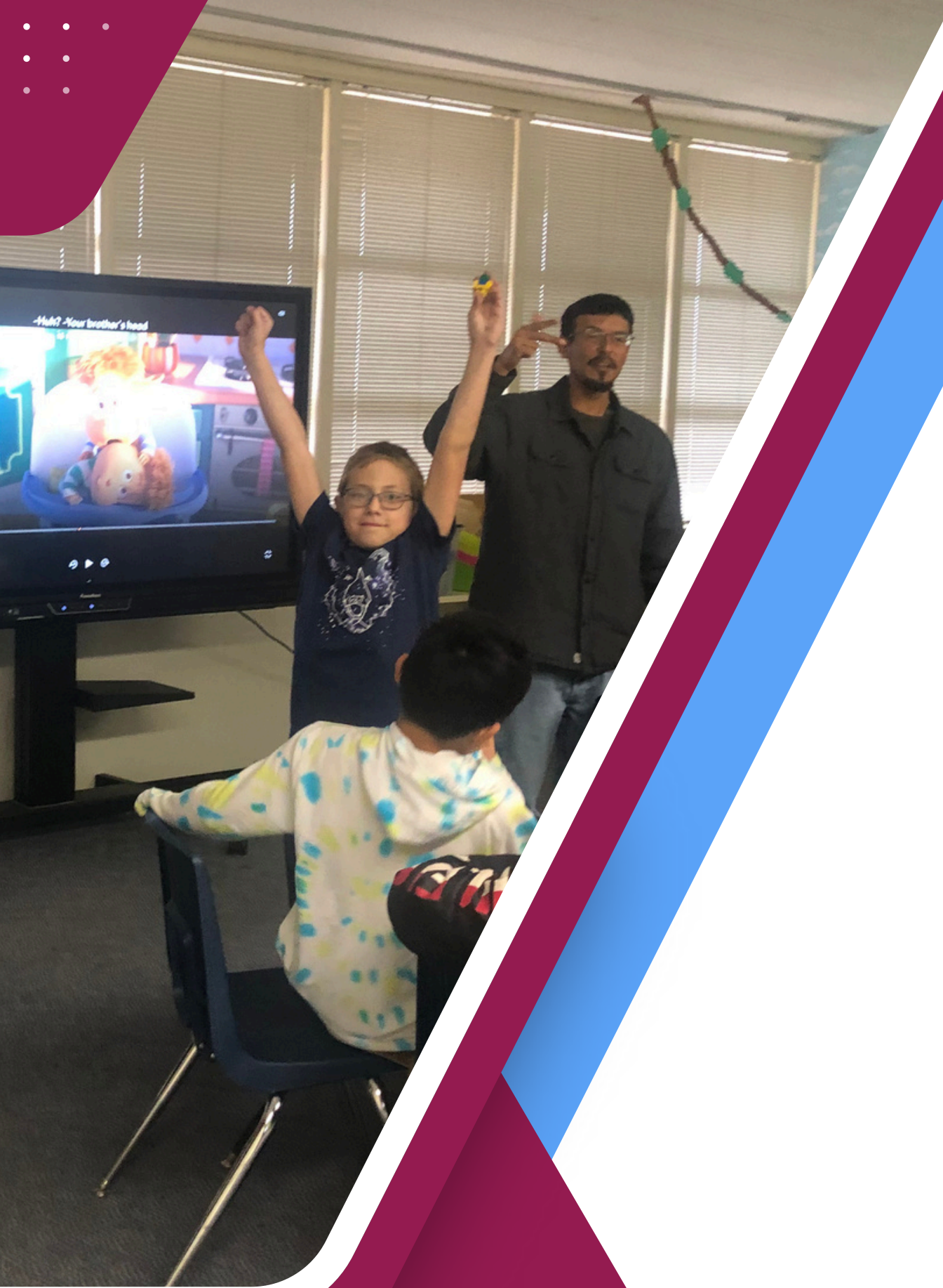
- **Academic Support:** Provide tutoring, mentoring, and personalized learning strategies.
- **Attendance Improvement:** Implement engagement initiatives, mentorship programs, and family outreach.
- **Behavioral Interventions:** Introduce conflict resolution training, counseling, and positive reinforcement programs.

Phase 3: Monitoring & Evaluation

- Track student progress in academic performance, attendance, and behavioral improvements.
 - Collect and analyze data to measure program effectiveness.
- Adjust strategies based on insights and feedback to ensure continuous improvement.

Phase 4: Expansion & Sustainability

- Scale the program based on successful outcomes and identified needs.
- Strengthen long-term partnerships to maintain impact.
 - Advocate for policy changes and additional funding to support ongoing efforts.



BENEFITS AND IMPACT

Implementing this holistic approach not only benefits students but also creates a positive ripple effect for educational institutions and the broader community.

- 1. Improved School Performance & Reputation** – Schools with higher academic success rates, better attendance, and fewer disciplinary issues attract more students and funding, enhancing their reputation.
- 2. Reduced Operational Costs** – Lower suspension rates and improved engagement reduce the need for disciplinary interventions and remedial programs, allowing schools to allocate resources more effectively.
- 3. Stronger Community & Business Partnerships** – Collaboration with families and community stakeholders strengthens relationships, leading to increased support, funding opportunities, and potential sponsorships.
- 4. Workforce Readiness & Economic Growth** – By equipping students with the academic and social-emotional skills needed to succeed, businesses benefit from a future workforce that is more prepared, engaged, and capable of contributing to economic development.
- 5. Sustainable Program Growth** – Demonstrated success in improving student outcomes can lead to expanded program funding, scalability, and long-term sustainability, ensuring continued impact.



OUR MANAGEMENT TEAM



Sabrina Green
Human Resource



Kina McFadden
Project Director



Candice Hill Calderon
School Site Coordinator



CONCLUSION

Call to Action

Join Us in Making a Difference!

Together, we can empower students to overcome challenges and achieve success. Partner with us to support academic growth, improve attendance, and reduce suspensions. Let's build a brighter future—one student at a time.

Many Hands Make Light Work!

Get Involved Today!



Success Stories & Testimonials

“Hand In Hand made a real difference in my child’s confidence and grades.” – Parent

**“Our mentors help us feel heard, safe, and ready to learn.”
– Student**

“This program bridges the gap between school and home.” – Teacher





CONTACT US

Phone

559.365.6340

Email

info@hinhmentoring.com

Website

<https://www.hinhmentoring.com>

Location

3025 W. Shaw Ave., Suite 108
Fresno Ca. 93711

